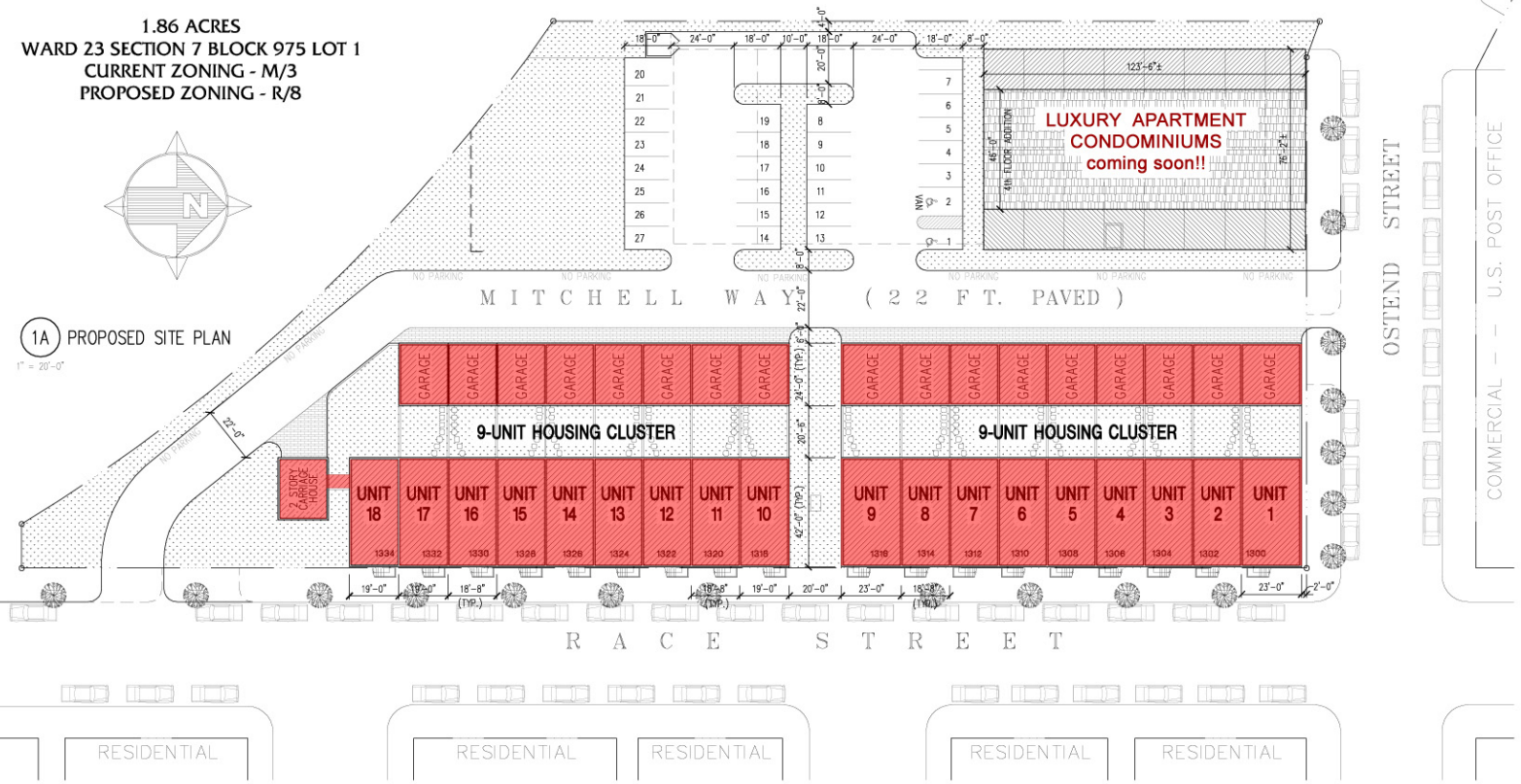


1.86 ACRES
 WARD 23 SECTION 7 BLOCK 975 LOT 1
 CURRENT ZONING - M/3
 PROPOSED ZONING - R/R



1A PROPOSED SITE PLAN
 1" = 20'-0"



AVAILABLE



SOLD

FOR OTHER AVAILABLE TOWNHOUSE UNITS IN THE NEIGHBORHOOD
 REFER TO HARBOUR POINTE [HTTP://LIVEHARBOURPOINTE.COM](http://liveharbourpointe.com)
 CONTACT: CHRIS CURREY 410-727-4622 or 410-336-5244